



Western Model A News

INSIDE THIS ISSUE

Events - MARCWA	1
Events - Club & Others	2
MARCWA contacts	2
President's Report	3
April Meeting Report	4
Whiteman Park	5
Annual Vehicle Inspections	6
Easter at Evedon	7
National Meet—Darwin	9
Electrical Systems	9
Classifieds	11
Member Update	11
Item of Interest	12
Sponsors	13

NEXT MEETING

Event: June club run and meeting

Date: Sunday June 21st

Time: 0930hrs for a 1000hrs departure.

Location: Assemble at Stirling Square, Guildford. Destination Bailup Ford Farm, 10400 Toodyay Road, Bailup. 40km from Guildford to Ford Farm. \$10 per person entry (cash only), donated to PMH. Gates open 11am. We may be joined at the museum by members of the Model T Ford section of the Veteran car club.

Contact: Ron Andrews 0411 889 825

FOLLOWING MEETING

Event: July Run and Meeting

Date: Sunday 12th

Time: TBA

Details: Run to Toodyay, lunch and meeting. There will be a short talk from a local historian with visits to local attractions. More details in the next newsletter.

COMING EVENT

August AGM and general meeting VCC rooms Sunday 9th

**FAILURE IS THE
OPPORTUNITY
TO BEGIN AGAIN
MORE INTELLIGENTLY.**

~ Henry Ford



More Event Information

CLUB

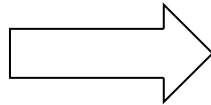
Cars and Coffee

Sunday May 24th, Midvale Speed Dome, Eddie Baron Drive, Midvale. 8am to 11am \$5 per car/bike \$10 swap meet bay. Spectators free

What's This ?

Ross's new Coupe and a classic example

"... a woman's work is never done..."



NON-CLUB

Council of Motoring Clubs - CMC Quiz Night.

Date: Friday 31st July 2015

Time: Starting at 7.30pm.

Location: Canning Exhibition Centre

Tables of 8 at \$10 per head.

Further details will be published soon via the CMC

Refer Ray Mahony 9271 7630 for more information.

ALL FORD DAY SHOW n SHINE

Date: Sunday 01 November 2015.

Location: Kingsway Football Oval in Madeley

More information: www.afd.asn.au

Please Note: decision whether to support this will be made at the June Meeting along with an organiser to coordinate.

Swap Meet and SHOW n SHINE

Date: Sunday 01 November 2015.

Time: 6am to 2pm

Location: Perth Polo Club, Parkfarm Drive, South Guildford.

By the West Coast Street Rod Club

Western Model A News is the official newsletter of the *Model A Restorers Club of Western Australia Inc.*

Copy deadline 1st of each month to: maofwainc@gmail.com or 95 Boulton St Dianella 6059

VIEWS EXPRESSED HEREIN ARE NOT NECESSARILY THOSE OF MARC of WA Inc.

MARCWA (INC.) CLUB CONTACTS

ELECTED:

President: Alan Jeffree 9275 4106
 Vice-President: Colin Davidson 9495 4445
 Secretary: Kathleen Kuenzel 9385 3887
 Treasurer: Bob Piercy 9405 3766
 Committee Member: Hans Hurij 9296 8744
 Committee Member: Ian Paisley 9456 1184

APPOINTED:

Vehicle Registrar: Ray Mahony 9271 7630
 Editor: Fred Manwaring 9475 0078
 Property Officer: Bob Newton 9341 5391
 Events Coordinator: Ian Paisley 9456 1184
 Regalia Officer: Fred Kuenzel 9385 3887
 Librarian: Dianne Paisley 9456 1184

Website: www.modelafordclub.com.au

Alan Jeffree

It seems a lot of planning is going into The Darwin National Meet and Horace has a small article further into this newsletter for you to start making group plans. I have had a phone call from member Des Addison who is looking to drive the West coast then return through Alice Springs and come across the middle. This could be another group so if interested give him a call.

It has been a busy time for some Club members, with Araluen, Whiteman Park display and vehicle inspections all in the last three weekends. Reports for each are included in this newsletter. Thanks to those who have participated in these events.

It is time for all members to consider nominating for your executive positions. All positions are declared vacant. Some of our team may choose to renominate but I would like to have several nominations by the next newsletter so profiles can be advertised. Nominations can be made at the AGM which is on the 9th of August but this doesn't give country members the opportunity for a postal vote.

The renewal of Subs this year has been a nightmare. I have had to phone (or try to phone), send second renewal forms, place notices in the newsletters and include a red cross in a box and still we haven't received all returns!! To date we have lost Gary Eva and Craig Freebairn who have chosen to resign but there are still a two not finalised! At our April meeting it was moved to send a final letter saying membership has lapsed to the remaining families.

At an all States delegates meeting held at Busselton in September it was decided we would not continue with Concourse judging at National Meets. The Eastern State clubs have gone away and discussed this and have come up with their decisions. WA members would have noted my request in the last newsletter for any members who would be interested in meeting with me to discuss vehicle judging. I am pleased to say I had Paul Kelly and Ian Paisley contact me but that was it! As I didn't have enough response I placed it on the April meeting agenda.

Summary of our response:

1. Leave the decision to each Club whether to include Concourse
2. Victoria wants to continue Concourse but suggested an all States committee to be the organisers, to set guidelines for all states and be responsible at each State National. Members present thought the Committee idea was good, but saw many logistical problems.
3. Rob Mawson suggested for consistency, there needs to be more specific judging sheets with details each examiner can follow.

A letter with our response has been despatched to the other States.

We have been invited back to Busselton on March 6th 2016 for the next Aerofest. A suggestion from me! A member to take this on and organise a week's run in the South west to link it in!!

To those members who aren't well, all the best and stay strong!

ARALUEN

Our April Araluen Run and Meeting

Dean and Jenni Roberts chose an excellent venue for the April outing which was their very first time of organising a Club Run. I haven't been there for twenty or so years and was surprised to see the improvement and had forgotten the beauty and uniqueness of the facility.

Dean had arranged for us to park in a special grassed area where there were plenty of seats and picnic tables. The eighteen Model A's were a picture. New member, Maxine Robins took many great photos and saved me from embarrassment as my battery went flat after two shots. There are a few photos with this article but I have placed several onto our web pages. I should let members know that our Photo page on the Web has been out of action for a couple of weeks but thanks to our Editor, Fred Manwaring it is up and running again! You can view photos under Photostream but I prefer in Albums. Flickr has also changed their format a little and I can now install a heading photo.

A special thank you to Toni Mahony for standing in for Kathleen's who was in Europe.

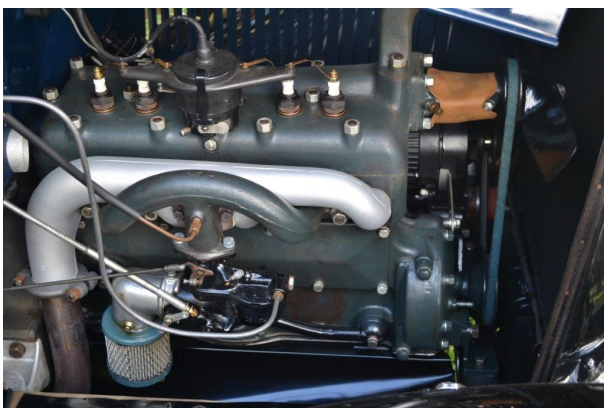
A very successful day, Jenni and Dean.



Photos in Review



Shows the two rows at our display



Annual Vehicle Inspections

Ray Mahony

As we all know, annual examinations are no longer a requirement of the concessional registration, however this club still offered the examination as a service to our members.

Our examination this year was held on the 10th of May and 12 cars were presented on the day. We also received an examination report from one country member. Although this was a very small number compared to the number of vehicles in the club, the value of examinations was clearly indicated by the fact that of the twelve cars examined, only two passed with a clean sheet. None of the items identified for attention was serious, but they were items of which the owners were not aware.

Seriously consider presenting your car for a check over next year. Can you be certain that all components are in good and safe condition. We would hate to have you break down or worse have an accident caused by something that could have been detected by our examiners.



As found Phaeton and a concourse winning Sedan



Ian Paisley's new Woodie



Jeff Blackman our first customer and Ron



Darlene and son Jeremy and the crew

(AKA schoolies for over 50's)

We met at the Shell service station in Thomas road in Casuarina at 9.00 am and then relocated down Johnson road and parked on the grass verge. Edith had a tray of steaming Hot cross buns which were set up on the trunk and quickly devoured for morning tea.

We travelled south at a leisurely pace and stopped at the truck bay just before Settlers road house for lunch and to stretch the legs. This was a popular place to have a break and there was a que waiting for the toilets. Traffic was general well behaved and we had a pleasant drive to the resort.

After we booked in at reception we went to our rooms to unpack and freshen up. Dinner that evening was a large variety of Pizza which were served up in the dining room and enjoyed by all.



Classy farm stay

We assembled in the car park at 8.45 next morning and drove to Bunbury where we parked on the river front. Club members were free to wander into town for a coffee and a snack before regrouping and driving to a local Farmers market to get meat for a BBQ. The range and display of foods in the market was very impressive.

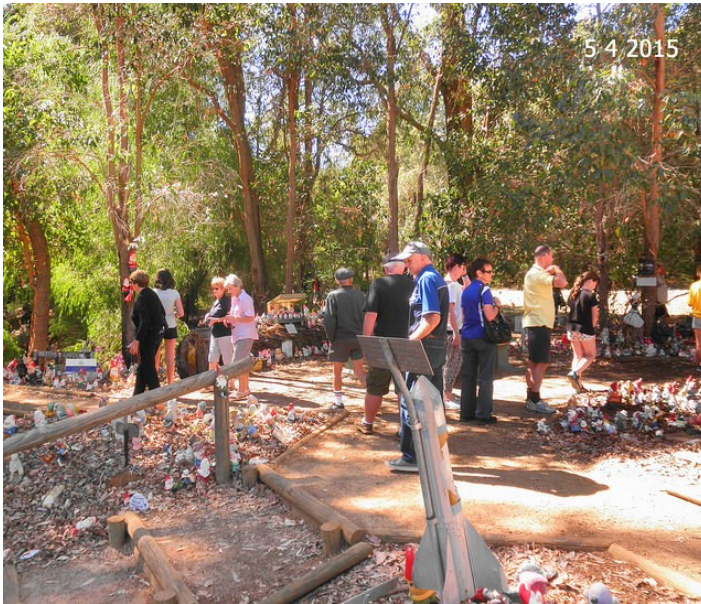
Bob was seen walking around chewing on the bone from a leg of roast lamb which he scored from the butcher who was handing out cooked samples.

Dinner was left over Pizza and a BBQ washed down by a cold beverage. The view of the sunset over the lake with the lights of Bunbury in the back ground was spectacular. We later sang happy birthday to David Bussard and shared a cake which was enjoyed by all.



On Sunday morning we drove to Collie where we were welcomed by the local section of the Veteran car club. A hot drink and morning tea was provided at their club rooms which was much appreciated.

Easter at Evedon Park



From there we travelled to Gnomesville to look at the ever increasing assortment of garden Gnomes.

I had not been there for a few years and was amazed just how much it had grown. There are Gnomes from all over Australia and the world. We continued on to Saint Aidents where lunch was served in a Marquee with lovely views over the winery.



Dinner that evening was a BBQ at the Cabins shared by the Jeffree clan.

Typical outdoor get together.

I travelled back on the Monday as I had work the following day. The cross wind along South West highway were unbelievable and I had a hard time keeping the Roadster in a straight line. I still think I was better off that the other club members who travelled back in pouring rain on Tuesday.

An excellent weekend in a beautiful spot with great company. Many thanks to Edith, Alan and all concerned for another well organised Easter break.

Ron Andrews

Horace Misko

MODEL A FORD NATIONAL MEET - DARWIN
 Sunday 22 to Saturday 28th May, 2016.

For members embarking on a road trip to the National Meet the following information will help to form groups interested in travelling together. Naturally members plans are subject to change and the decision to join a group is entirely your own.

One group already formed is led by Wayne and Neville from Collie. They are driving their Model A's towing their retro style camper trailers. They have indicated that they will travel to the start of the rally in Katherine via Broome and return from Darwin via Alice Springs and Coober Pedy. Bob the Builder and Darryl with his Hilux and box trailer indicated that they might join them. Perhaps Anthony with his new caravan too. Others driving their Model A's include Brett, Gavin(NZ),Richard (NSW), Reg,Colin, Peter (Esperance). Members trailering their Model A's or attending without their Model A 's include Wes,Barry (Northam), Ray, Dean, Ian, Kerry (Narrogin), Horace.

This article is intended to start conversations between members to enable them to form groups to travel together. The members of each group should meet and formulate a travel plan.

THE ELECTRICAL SYSTEMS

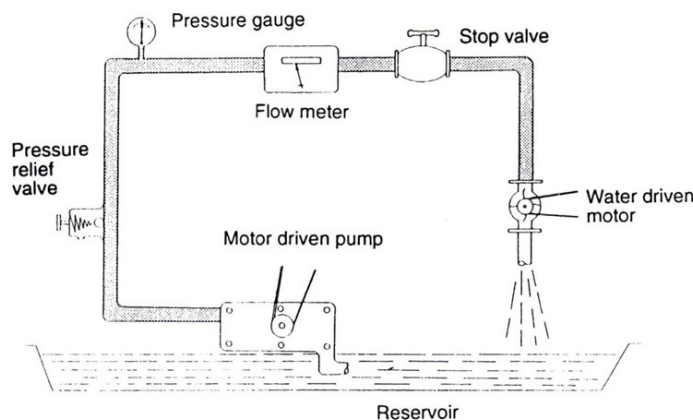
by Ray Mahony

WATER ANALOGY

Before looking at how electro-magnetism is used it is probably a good idea to get a picture in our mind's eye as to how current flows and is effected in an electrical circuit. In many ways an electrical circuit is similar to a hydraulic circuit.

The hydraulic circuit has a pump that provides the pressure, a control device (tap) and a component to operate, (e.g. a hydraulic motor) and pipes to carry the fluid to the component and back to the reservoir.

fitted with a pressure gauge



The system could be pressure relief valve, and a flow meter.

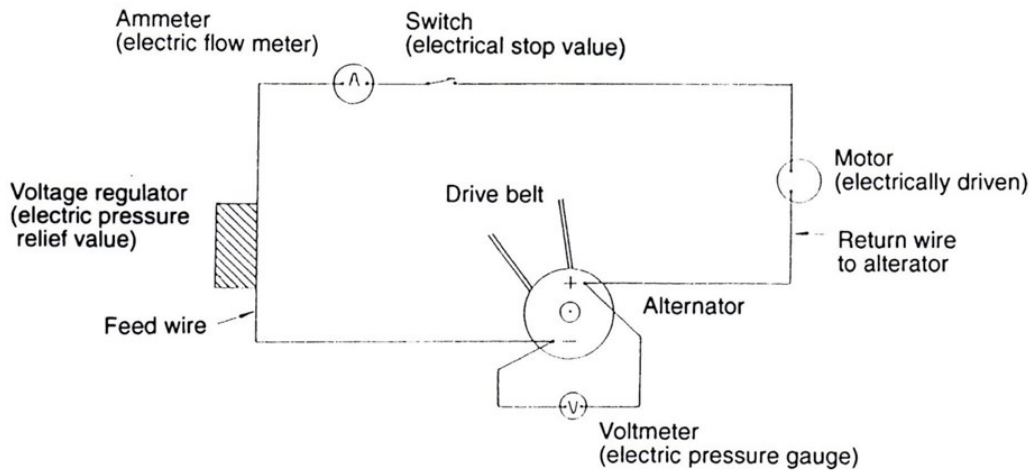
Hydraulic circuit

Cont'd over

by Ray Mahony

The electrical circuit has a device to provide a voltage (pressure) i.e. the (Battery, generator or alternator, a control device (switch), a component to be operated, e.g. relay, cut-out ,starter motor or headlight and wires to carry the current from the voltage source to the component and back to the power source.

The pressure in the electrical circuit is measured by a volt meter, flow is measured with an ammeter and the pressure relief, on vehicles other than a Model A, is controlled by a voltage regulator.



Electrical circuit

It is probably worth noting here that you can have a voltage being applied to a circuit without having current flow. If the electrical switch is off there is still voltage being applied from the power source. Just as if you turn off the nozzle on the end of your garden hose there is still pressure in the hose.

If you have trouble imagining current in the wires of an electrical circuit, just think of it as water flowing through pipes.

APPLICATION OF ELECTRO-MAGNETICS

We now have enough technical knowledge to look at how some of the electrical components in our car work. Electro-magnets are used in generators, starters, wiper motors, cut-outs, horn and light relays and ignition systems.

We will start with a **Cut-our Relay** or perhaps as it should be more correctly called a **Reverse Current Relay**.

The cut-out allows current to flow from the generator to the battery and other circuits when the generator is charging. That is when the generator output voltage is higher than the battery voltage. It prevents current flowing back into the generator when the generator voltage drops below the battery voltage.

Current flowing from the battery to the generator would over heat the generator winding and burn them out.

For Sale: 1928 Model A Ford Roadster

Complete with hood bows, seat springs, two spare front mudguards.

Full set (5) of excellent 21" wheels and Hubcaps, new door locks, bonnet apron, and other hardware to go with it. Runs and drives. Comes complete with powdercoated windscreen frame, new wind-shield glass and stanchions. All the hard to find items are on the car.

\$16,000.00

Contact: Ron Andrews. 0411 889 825

**Whiteman Park "Snippet"**

A member of the public Brian French mentioned in conversation with a member at Whiteman Park, he has a 1934 Ford Phaeton available for sale. He has had it for some 20 years and it is in good condition, but does need some repair. The car is in the metro area.

Contact: Brian French on 9377 7837. Price negotiable.

MEMBER DETAILS

Change of Address: Please modify your member directory to the following updated information.

Frank and Ann Lawton

355 Haddrill Road

Baskerville

WA 6056

Home phone — to be advised. (old number cancelled)

As received from our New Zealand affiliates — For your information

6 VOLT TO 12 VOLT CONVERTER FOR CLASSIC, VETERAN AND VINTAGE CARS



CRUISING ELECTRONICS
17 MOREY ROAD, CABLE BAY 0420, NORTHLAND, NEW ZEALAND
Telephone (09) 4062020 International +64 9 4062020
Email: don@cruisingelectronics.com Website: www.cruisingelectronics.com

This clever voltage and polarity converter provides 12.4 volts output from your vintage or classic car 6v system
Input voltages from as low as 4.0 volts are converted to a fixed output of 12.4 volts

OPERATES ON POSITIVE OR NEGATIVE CHASSIS VEHICLES, 6 VOLT OR 12 VOLT SYSTEMS

Now you can operate your new Radio, CD Player, GPS Navigation, Cell Phone Charger
Perfect for voltage conversion in the 6 volt vintage Ford, Chevy, Holden, VW, Jaguar etc

** SPECIAL INTRODUCTORY OFFER **
*** INCLUDES A FREE 6 VOLT RELAY TO FACILITATE INSTALLATION (VALUE NZ\$13.25) ***

- Input voltage allowable 4.0 to 36 volts, (so can be used also on a 12v + chassis vehicle, or even a 24 volt system + or - chassis)
 - Works on Positive OR Negative chassis vehicles - no modifications necessary to the vehicle, radio or Converter
 - Output voltage fixed at 12.4 volts DC \pm 2%
 - Output current 4 amps @ 4.0 volts input
 - Output current 5 amps @ 5.0 volts input
 - Output current 7 amps @ 6.0 volts input or higher
 - Fan cooling built-in - automatic temperature controlled
 - Standby current (no output load) 200mA @ 6.5v
 - Conversion efficiency varies with voltage and load, 82% at 5v input
 - Polarity reversal protection
 - Output voltage ripple factor < 1%
 - Input/Output isolation between input and output leads and the leads and frame is 500 volts
 - Weight 685 Grams (1.5 lb)
 - Dimensions 150 x 55 x 95 mm (6" x 2.1" x 3.75")
 - Ambient temperature allowable from -20 to +80 degrees C (-4 to +176 F)
 - Input and output connections by colour coded bare wire leads, with a fuse incorporated in the input + lead
- All specifications subject to change or design improvements without notice

Please support these valued sponsors

RAY ABBOTT ENGINE RECONDITIONING
“RECONDITIONING THE PAST
SPECIALISING IN VETERAN, VINTAGE & CLASSIC ENGINES
FIFTY FOUR YEARS EXPERIENCE : IN BUSINESS FOR 41YEARS



CYLINDER HEAD SERVICING,REBORING, RESLEEVEING, CONROD RESIZING & BUSHING, LINE BORING & REMETALLING
 CRANK REGRINDS, PRESSURE TESTING, PISTON GRINDING &/OR EXPANDING, CAMSHAFT GRINDING .

COMPLETE ENGINE REBUILDS

18 Rio Street, Bayswater

PHONE 08 9272 4566 FAX 08 9271 5717

Rebuilding Oldies Better Than New

Recommended by MARCWA members

VETERAN, VINTAGE, CLASSIC
LUBRICANTS & ELECTRICAL

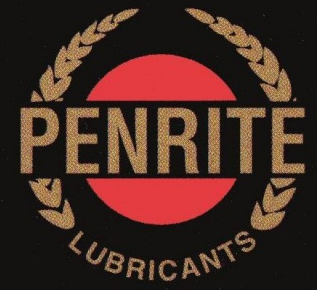
Halogen Bulbs 6v & 12v Tungsten Bulbs 6v & 12v Indicator Stalks
 Flasher cans 6v & 12v Tail lights Indicator Lights (over 30 different types)
 Fuel Pumps 6v & 12v Wiper Motors 6v & 12v Wiper Blades

Cables (Cotton Covered, Metal Covered, PVC)
 High Tension Cable (Cotton Covered, Black PVC)

Spark Plugs 19” and 21” Model A Tyres Tubes Rust bands

and All Things Vintage

Bob Beames 6 Rio Street, Bayswater WA 6053
 Mob: 0419 276 411 Ph: 9272 6411 Fax: 9370 1506



Obsession with oil



FORD MODEL T & A PARTS



Keith & Glenys Eastwood
 129 Balance Road
 Ballan 3342
 VICTORIA, AUSTRALIA

Ph (03) 5368 1088
 Fax (03) 5368 1007
 Mobile 0402194723

kg@henryspares.com.au

